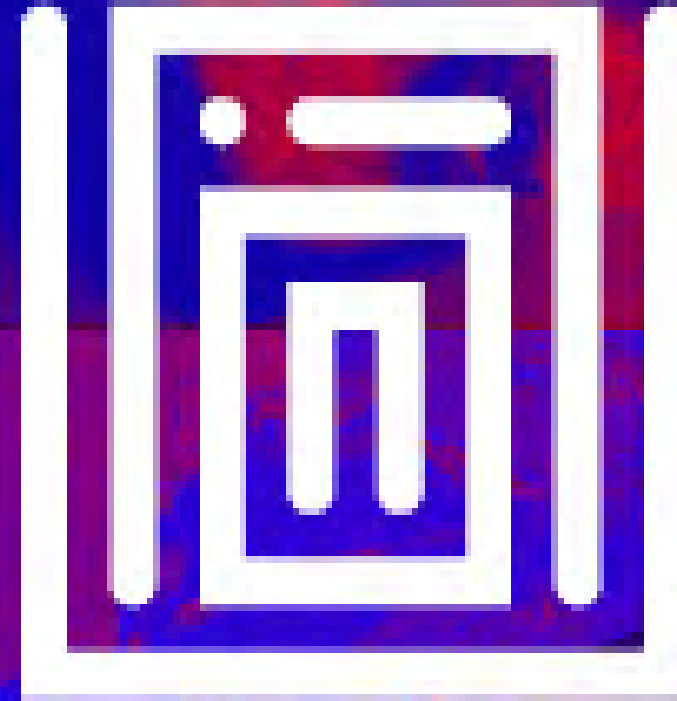


Location Hire



The Union

© 2014 THE UNION / ALL RIGHTS RESERVED  
THE UNION / ALL RIGHTS RESERVED



# Film shoot & Dry Hire

The Union is a listed Georgian town house and 1900's warehouse space in Soho, W1

A wide variety of spaces are available at competitive day and half day rates.

Green room, storage and changing room facilities available.

**The Union is fully risk assessed and anti-Covid prepared**

See our rate card and e-mail [pete@unionclub.co.uk](mailto:pete@unionclub.co.uk) for availability.

Or call 07946 013 595



*'Whatever it is they do at the Union - they've got it right!' - Michael Palin*



## First floor dining Room

An original Georgian drawing room of great authenticity and elegance.

Light and airy with a collection of 20th century lights and chandeliers, this curated room is where Georgian heritage meets the contemporary.

Satellite rooms are available for changing and storage.

**From £750 per day**  
**£400 per half day**

Charges subject to VAT







## The Studio

The Studio is our largest multi-purpose space for almost any kind of dry-hire event; film shoots , fashion shoots, art shows, exhibitions and product launches.

The room offers industrial chic, with large windows, skylights, chunky french street lighting and exposed beams.

It has direct access to the street for ease of equipment and prop delivery

**From £1000 per day  
£600 per half day**

**Charges subject to VAT**





# Studio as Gallery

The Studio is available for short term and longer term gallery style shows.

The space has white walls, spot lights and a picture hanging system in place.

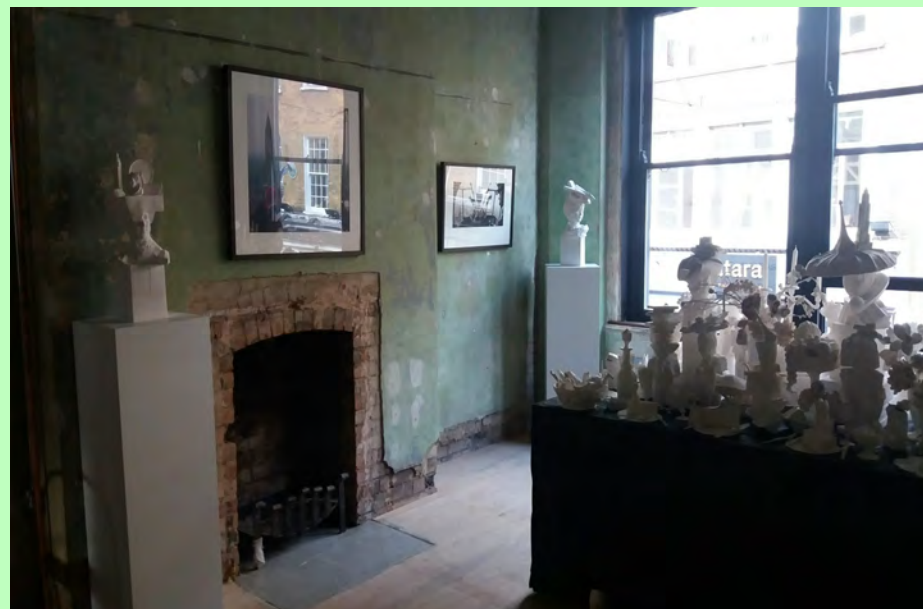
It has direct access to the street for ease of art work delivery.

Free parking on Sunday

Additional storage available.

**From £1500 private  
view hire**

**Charges subject to VAT**





# Studio as Event Space

The Studio is available for any kind of event.

Parties, receptions, product launches for up to 120 people can be accommodated

It has direct access to the street for ease of equipment and prop delivery.

Storage available.

6 channel P.A. available

**Prices vary**

**Charges subject to VAT**





## Ground Floor Bar

An original Georgian room with a rich texture of art and antiques.

Satellite rooms are available for changing and storage.

**Charges available on request**

Charges subject to VAT







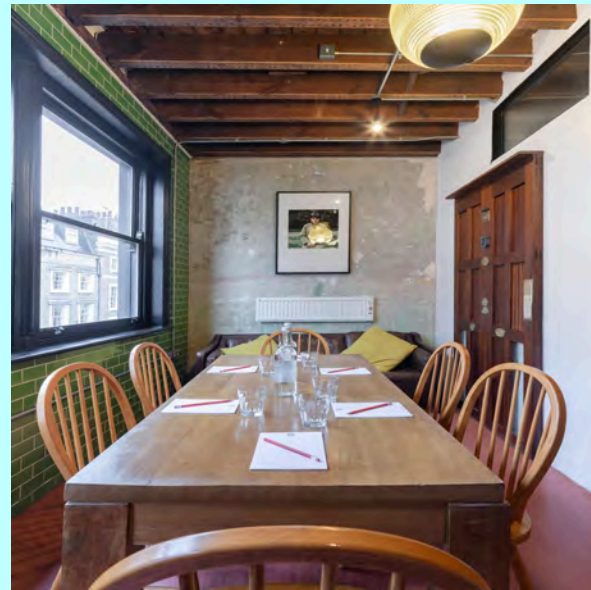
## Roof Terrace

Our private roof terrace is a sunny garden that offers useful exterior space in the heart of Soho

Price available on request  
Charges subject to VAT







## The Writers Room

A smaller room for interviews, meeting and shoots.

Available in conjunction with other rooms as dressing rooms or storage.

**From £300 per day  
£180 per half day**

Charges subject to VAT







## The Channing Williams Room

A medium size room for interviews, meetings and smaller shoots.

Available in conjunction with other rooms as dressing rooms or storage.



**From £400 per day  
£250 per half day**

Charges subject to VAT







## The Bellville Room

The Belville is a small room for interviews, meetings and for use as a dressing room.

**£250 per day**

**£150 Per half day**

**Charges subject to VAT**

## The Library

The Library Room is a smaller room with direct access onto the roof terrace

It's a useful space for small meetings, interviews, smaller shoots and presentations.

**From £300 per day**

**£180 per half day**

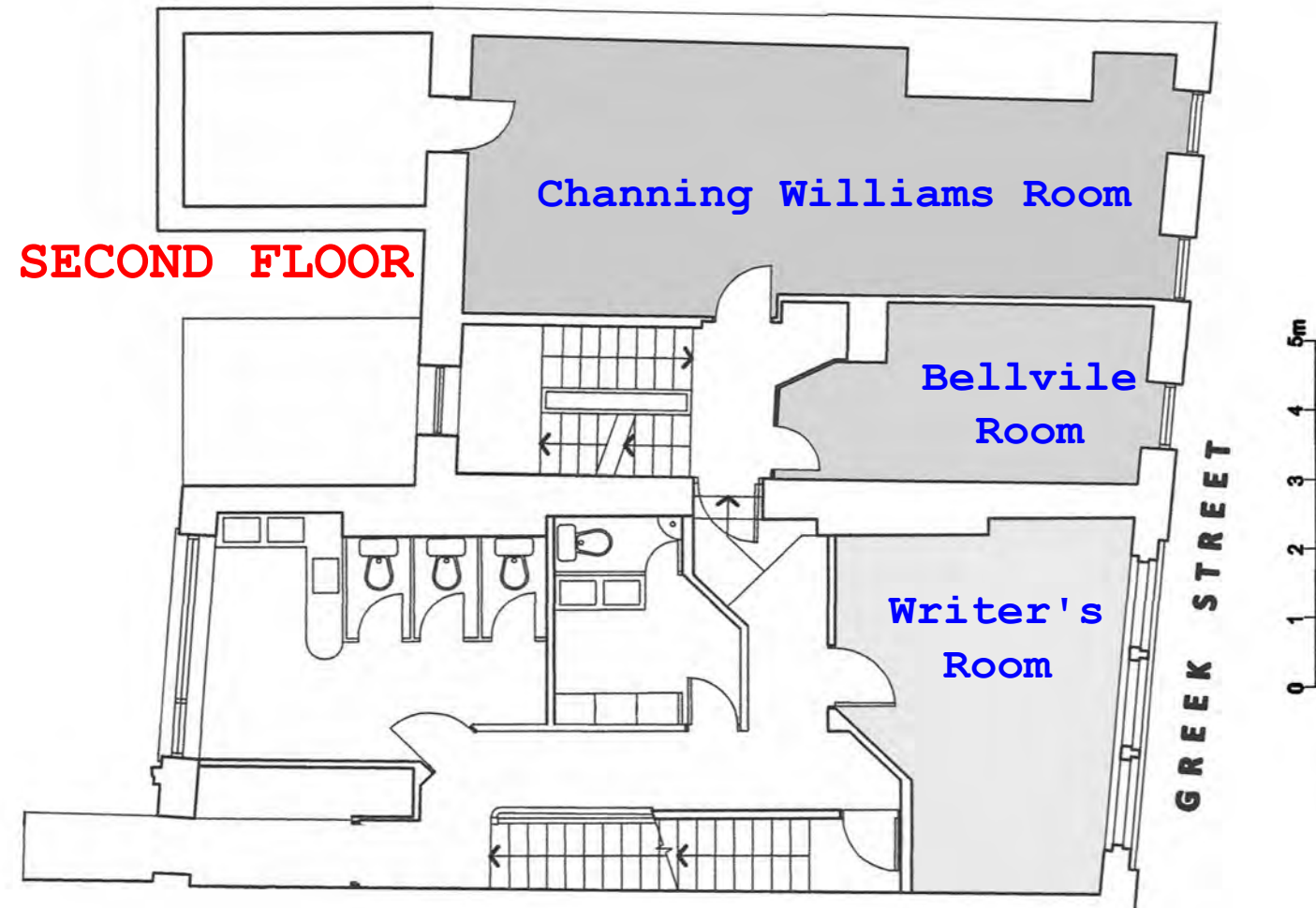
**Charges subject to VAT**







## SECOND FLOOR



### Channing Williams Room

30 sqm. 3m x 10m Capacity 30 for reception, 20 private dining, 20 meetings. High speed broadband. 42 inch plasma AV screen. Air conditioned.

### Bellville Room

10 sqm. 2m x 5m Capacity 2-4 for meetings, High speed broadband.

### Writer's Room

12 sqm. 3m x 4m Capacity 6 for meetings or private dining. 42 inch plasma AV screen. High speed broadband.

The first floor offers a variety of spaces suitable for your events and meetings and can include full conference set up, AV services, flip charts, conference phones, presentation screens and wi-fi, in a variety of different room set-ups.

All available on request Max 200 guests for stand-up events or 300 using all spaces.

### Studio Event Space

100 sqm. 20m x 5m. Capacity 150 standing. 100 sit down. High speed broadband. Access to private roof terrace available. Access to additional rooms on same floor (Library Room, Dining Room). Total capacity of whole first floor (Studio, Library, Dining Room: 220). Air Conditioned.

### Dining Room

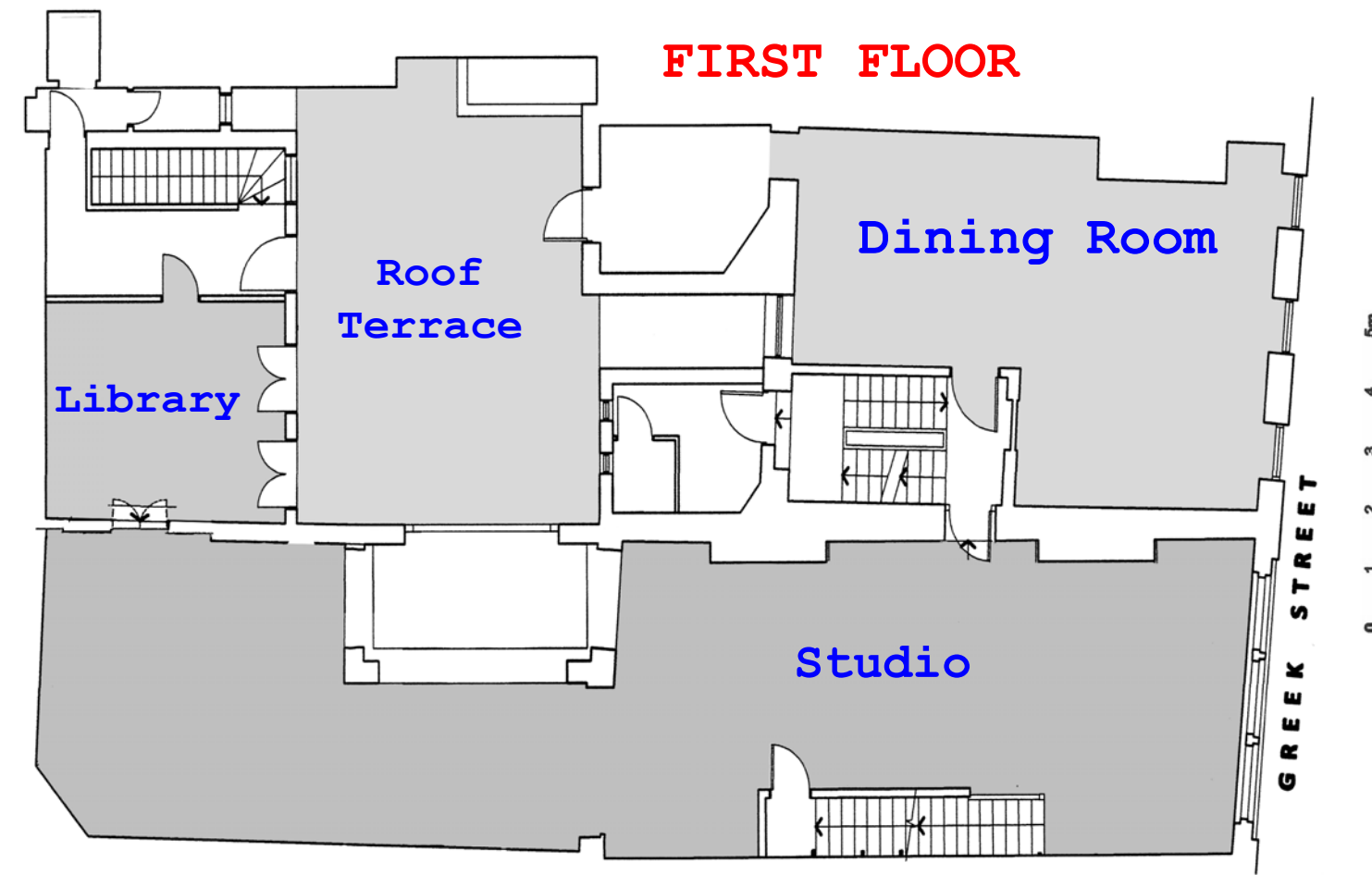
60 sqm. 5m x 10m. Capacity 60 standing. 60 sit down (5 round tables of 12 persons each). High speed broadband. Air Conditioned.

### Roof Terrace

20 sq m 5m x 4m capacity 50 standing 25 for sit down lunch or dinner

### Library

16 sq m. 4mx4m. Capacity of 10 for meetings or private dining



## FIRST FLOOR



## Access

Situated 300m from Tottenham Court Road and Leicester Square tube stations

Free parking outside on Sunday

Multi-storey parking in Chinatown  
300m

Easy street access for equipment and props

Wheel chair access

Early start available 7am

## Location Checklist



The Union

Membership of the Union is always open to people appreciate the Union style.

If you think the Union might provide an environment where you can belong give us a call On 0207 437 4002 or e-mail Cat at [catherine@unionclub.co.uk](mailto:catherine@unionclub.co.uk)

Full membership is £600 per year

## Facility

Fully risk assessed and anti-Covid prepared.

All spaces available individually or as a whole (POA)

Catering available for crew and extras

Clothes rails and blackout

16 amp and 32 amps available in Studio

Broadband throughout

A variety of furniture available